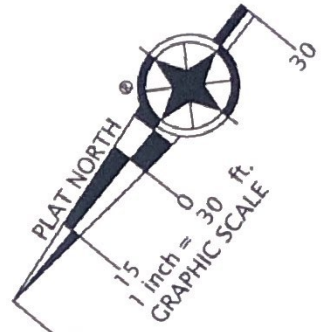


NOTES: 1. FENCES ARE FRAME.
2. UTILITIES ARE UNDERGROUND.

LOT 1
SECTION 1

EUSTACE ROAD

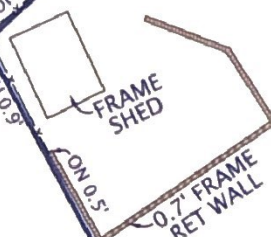
VARIABLE WIDTH ~ STATE ROUTE 751



S 08°14'56" W
43.55'

S 68°54'50" W
119.44'

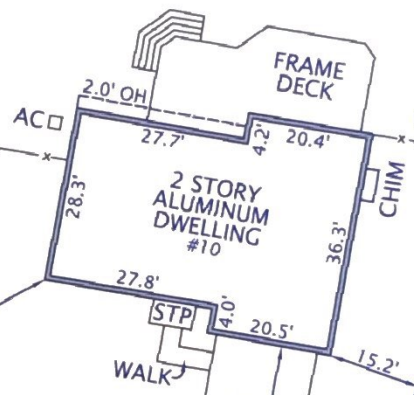
A=25.36'
R=569.40'



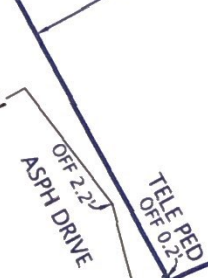
39
16,709 SF

S 67°17'01" E
155.82'

130.32'



N 18°32'08" W
130.32'



A=49.32'
R=52.00'

N 77°03'51" E
3.00'

QUIET BROOK COURT

50' R/W

PLAT
SHOWING HOUSE LOCATION ON
LOT 39

HUNTER TRAIL AT STAFFORD

(PLAT BOOK 20, PAGE 184 THRU 186)

STAFFORD COUNTY, VIRGINIA

ROCKHILL DISTRICT

SCALE: 1" = 30'

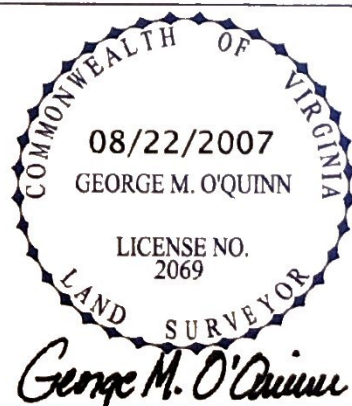
AUGUST 22, 2007

I HEREBY CERTIFY THAT THE POSITIONS OF ALL THE EXISTING IMPROVEMENTS HAVE BEEN CAREFULLY ESTABLISHED BY A CURRENT FIELD SURVEY AND UNLESS SHOWN THERE ARE NO VISIBLE ENCROACHMENTS AS OF THIS DATE:

THIS PLAT IS SUBJECT TO RESTRICTIONS OF RECORD.

A TITLE REPORT WAS NOT FURNISHED.

NO CORNER MARKERS SET.



CASE NAME:

STUBERT ~ BUSH

STONEWALL TITLE & ESCROW, INC.

DOMINION Surveyors Inc.®

8808-H PEAR TREE VILLAGE COURT
ALEXANDRIA, VIRGINIA 22309
703-619-6555
FAX: 703-799-6412

COPYRIGHT BY DOMINION SURVEYORS, INC. THE INFORMATION CONTAINED ON THIS DOCUMENT MAY NOT BE COPIED, REPRODUCED OR ALTERED IN ANY FORM WITHOUT PERMISSION IN WRITING FROM THE COPYRIGHT OWNER.