



Understanding What Matters Most

Presents

2905 MONTAUK COURT



LAKEFORD

Falls Church, Virginia

RE/MAX[®] Allegiance

This could be your new home...



Living Room



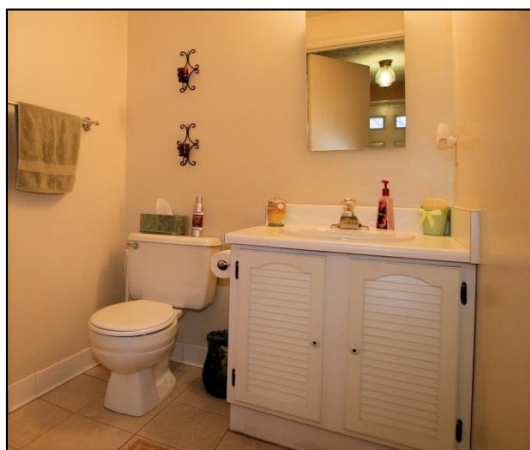
Kitchen



Dining Room



Lower Level Recreation Room



Main Level Full Bath



Laundry/Storage

Spacious rooms throughout the home



Three total bedrooms, two full bathrooms on the upper level



Large master bedroom with private full bathroom

Your Private Retreat



Divide your outdoor time between your private backyard and Lakeford's community lake, tennis courts, tot lots, and more.



Your Neighborhood

You'll have a scenic lake and tennis courts just steps away from your front door!



In addition to multiple convenient shopping opportunities nearby, this home is located by many major roadways; I-66, I-495, Route 50 and Lee Highway/Route-29. There are also many options for public transportation in your neighborhood.



Special Features

INTERIOR

Large eat-in Kitchen
Separate dining room
Master Bedroom with private full bath and closet
Bathrooms on every level
Ceiling fans throughout home
Carpeted Bedrooms
Finished Recreation Room on lower level

EXTERIOR

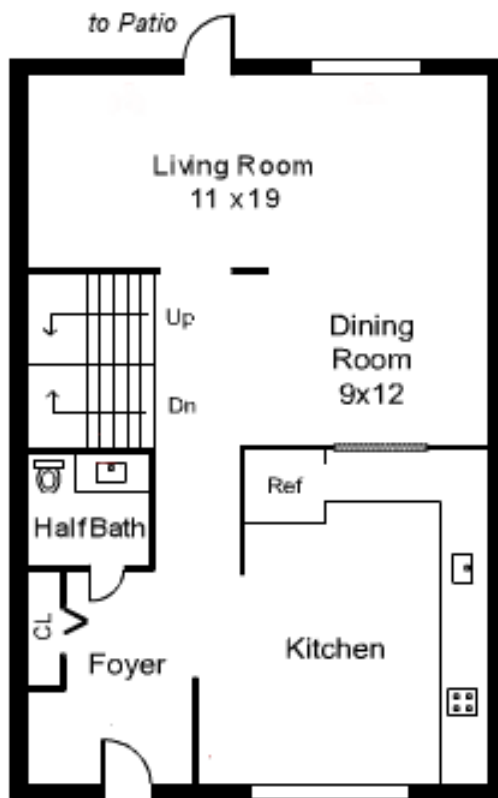
Two Assigned Parking Spaces
Fenced Rear yard
Fairview Lake nearby
Brick and siding exterior
Private cul-de-sac

LOCATION & TRANSPORTATION

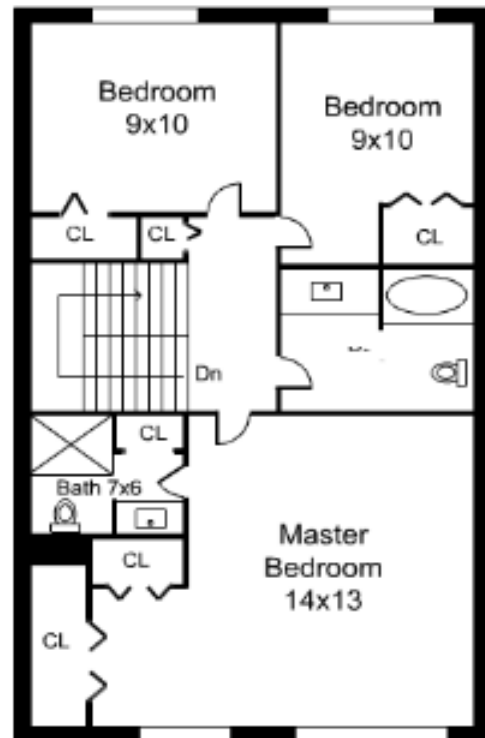
Located near I-66, I-395, Route 50, and Lee Highway/Route 29
Dunn Loring-Merrified Metro Station within three miles

Floor Plan

Main Level



Upper Level



Lower Level

